



## H-x110 - Dielectric Unions

### H-0110W Series

#### Dielectric Union

Galvanized Steel & Brass  
w/ Nylon Insulator Ring

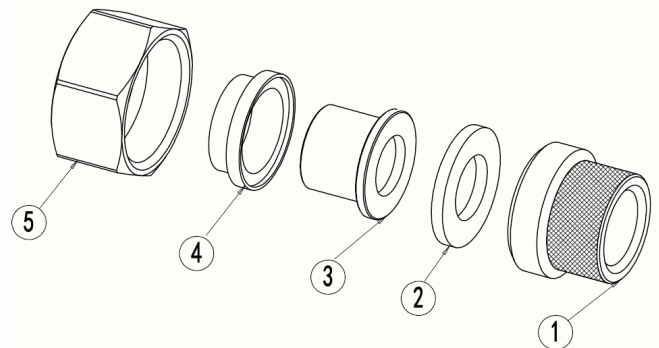
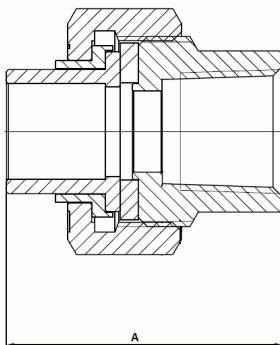
#### Certifications

Certified to NSF/ANSI 61 & 372



NO.	DESCRIPTION	MATERIAL
1	FIP Fitting	Steel CP
2	Union Washer	EPDM
3	Union Fitting	Lead Free Brass
4	Union Insulator	POM
5	Union Nut	Steel CP

Size (in)	Item#	Weight (lbs)	CTN Qty	Case Qty	A		
<b>FIP x MIP</b>						<b>200 PSI CWP Max</b>	<b>200°F Max</b>
3/4"	H-21103W	0.78	10	40	2.24		
<b>FIP x SWT</b>						<b>200 PSI CWP Max</b>	<b>200°F Max</b>
1/2"	H-01102W	0.31	24	144	1.81		
3/4"	H-01103W	0.40	24	96	1.96		
1"	H-01104W	0.54	12	96	2.20		
1 1/4"	H-01105W	0.85	6	48	2.48		
1 1/2"	H-01106W	1.36	6	36	2.64		
2"	H-01107W	2.42	6	18	3.05		
3/4" x 1/2"	H-01132W	0.37	24	96	1.96		



Specifications: Designed for use with water, oil, glycol mix in residential or commercial plumbing and heating systems. Threaded (NPT) ends comply with ANSI B1.20.1. Solder joint temperature ratings are per ASME B16.18 Annex A for 95-5 solder. Do not silver braze or overheat valves when soldering.





## H-x110W Series

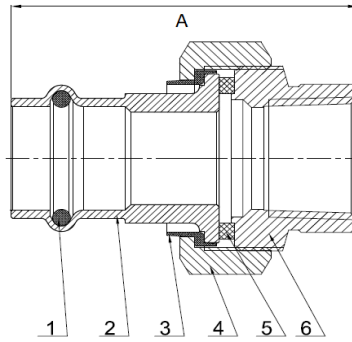
Dielectric Union  
Galvanized Steel & Forged DZR Brass  
w/ Nylon Insulator Ring

### Certifications

Certified to NSF/ANSI 61 & 372 - PS117  
Complies with ASSE 1079  
Lead-Free



NO.	DESCRIPTION	MATERIAL
1	O-Ring	EPDM
2	Press Fitting	Lead-Free DZR Brass
3	Insulator Ring	Nylon
4	Union Nut	Galvanized Steel
5	Gasket	EPDM
6	FIP Fitting	Galvanized Steel



Designed for residential, commercial, or industrial use with water, oil, or glycol mix. PEX end dimensions comply with the referenced ASTM specification. Press models 1.25" and larger meet the applicable requirements of ASSE 1079-2012

ITEM#	Connection Type	SIZE (In)	Max Temp	Pressure Rating	A
H-81102W	FIP x Press Union	1/2"	180°F Max	250 PSI CWP Max	2.52
H-81103W	FIP x Press Union	3/4"	180°F Max	250 PSI CWP Max	2.76
H-81104W	FIP x Press Union	1"	180°F Max	250 PSI CWP Max	2.87
H-81105W	FIP x Press Union	1 1/4"	180°F Max	250 PSI CWP Max	3.23
H-81106W	FIP x Press Union	1 1/2"	180°F Max	250 PSI CWP Max	3.41
H-81107W	FIP x Press Union	2"	180°F Max	250 PSI CWP Max	3.76