

Residential Power Vent Low NOx

American Standard[®]
WATER HEATERS

www.americanstandardwaterheaters.com

Available in gallon capacities of 40 and 50 Tall & 50 Short configurations - Natural or LP Gas

Features

ENERGY STAR[®] QUALIFIED – All models qualify for the April 16, 2015 minimum ENERGY STAR[®] UEF requirement and may also qualify for local utility and rebate programs.

FACTORY INSTALLED HEAT TRAPS – Reduces standby heat loss in water piping.

HFO FOAM INSULATED – 2-inch thick, "Environmentally-Friendly" insulation foam saves energy, reduces fuel costs by maximizing heat retention, and contributes to overall energy efficiency.

INTELLIGENT GAS CONTROL – With a hot surface pilot ignition system. This results in savings of pilot gas during standby periods (120 V.A.C.). A Microprocessor constantly monitors and controls burner operation to maintain consistent and accurate water temperature levels.

LED control light displays operation status and diagnostics information to assist the installer in troubleshooting.

Built-in gas pressure regulation also incorporates energy cut-off switch to prevent abnormally high water temperature for added safety.

FLAMMABLE VAPOR SENSOR – The electronic sensor connected to an electric switch prevents burner operation if flammable vapors are detected. The sensor and electric switch will also prevent operation if there is ongoing flammable vapor burn inside the combustion chamber.

VAPORSHIELD TECHNOLOGY – Shuts off gas to the heater and stops the blower to prevent prolonged vapor burn in the combustion chamber should accidental or unattended ignition of flammable vapors occur outside the water heater.

HEAVY GAUGE STEEL TANK – For extra years of trouble-free service.

GLASS-LINED TANK – Inner tank glass-lined with Dura-Glas[™] and fired at 1600° F for optimum protection from the effects of corrosion.

ALUMINUM ANODE ROD – To protect tank life.

BRASS DRAIN VALVE – (Full Port Ball)- Designed to allow easy draining and avoid clogging.

TEMPERATURE & PRESSURE RELIEF VALVE – Factory provided T & P Valve can be relocated from side to optional top opening.

MAINTENANCE FREE – No periodic cleaning of combustion air inlet necessary under normal conditions.

SELF-CLEANING – Turbulence inducing cold water inlet-tube engineered to diminish hard water area sediment deposits.

FACTORY INSTALLED HOT & COLD WATER CONNECTIONS – ¾" NPT water connections for extended tank life and easier installation.

POWER VENTED WATER HEATER – Designed for installations where atmospheric units cannot be used. Exhaust gases are vented under positive pressure directly out of the building through the roof or the wall.

SIGHT GLASS WINDOW – Offers a view into the combustion chamber to observe the operation of the igniter and burner.

DESIGN-CERTIFIED BY CSA INTERNATIONAL – Certified at 150 PSI working pressure & Certified to ANSI Z21.10.1 standards governing storage tank-type water heaters.

Six (6) YEAR LIMITED TANK WARRANTY – Includes 6 Years Limited Warranty on tank and component Parts.



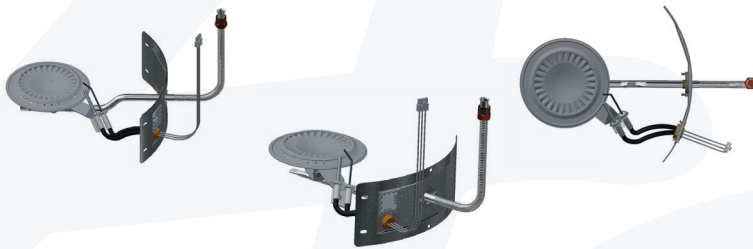
1 Nominal Capacity

561 New York Drive, Pomona, California 91768
Toll Free: (800) 900-9063 - Fax: (909)392-7302

SPECIFICATIONS AND APPLICATION DATA

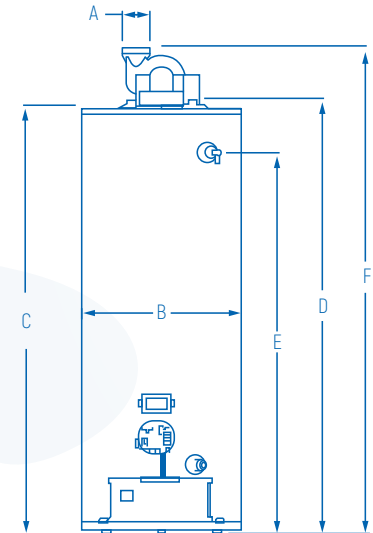
							DIMENSIONS IN INCHES (HEIGHT TO).								
							R FACTOR	VENT DIAM A	JACKET DIAM B	TOP OF HEATER C	TOP OF WATER D	SIDE T & P E	TOP OF VENT CONN F	WTR SPREAD G	APPROX SHIP WGT (LBS)
MODEL NUMBER	NOMINAL VOLUME (GALLONS)	RATED VOLUME (DOE)	FIRST HOUR RATING GALLONS	BTU INPUT NAT & LP GAS	GPH RECOVERY AT 90°F RISE	UNIFORM ENERGY FACTOR									
PV40TLN	40	38	78	40,000		0.72			20 5/16	59 3/4	60 3/4	53 1/2	68		174
PV50TLN	50	48	81	40,000	43	0.71	16	3	22 3/8	58 1/8	59 1/8	51 5/8	66 1/2	8	190
PV50SLN	50	48	80	40,000		0.69			24 3/8	50	51	43 1/4	58 3/8		220

STANDARD ROUND BURNER



For 12 year models, change the model number suffix from "6" to "12".

- Example: PV40TLN-12
- Recovery capacity based on actual performance tests.
- All models are certified at 300 PSI test pressure and 150 PSI working pressure.
- Dimensions and specifications subject to change without notice in accordance with our policy of continuous product improvement.



MODEL NUMBER	MINIMUM VENT LENGTH EQUIVALENT FT.		MAX VENT LENGTH EQUIVALENT FT.	
	2"	3"	2"	3"
PV40TLN				
PV50TLN	7 ft + termination elbow	15 ft + termination elbow	50 ft + termination elbow	120 ft + termination elbow
PV50SLN				

The maximum vent length shall be reduced by 5 feet of pipe for each additional 90° elbow. For each additional 45° elbow the maximum vent length shall be reduced approximately 3 feet of pipe.

SAMPLE SPECIFICATION

Water heater shall be American Standard model _____ having a storage capacity of _____ gallons, operate on Natural or L.P. Gas with a BTU input of _____ and a recovery rate of _____ gallons per hour at 90°F temperature rise. Water heater tank interior shall be glass lined with Dura-Glas™, furnished with anode rod and insulation shall be HFO foam. Water heater shall be CSA certified.