



Evergreen® EM

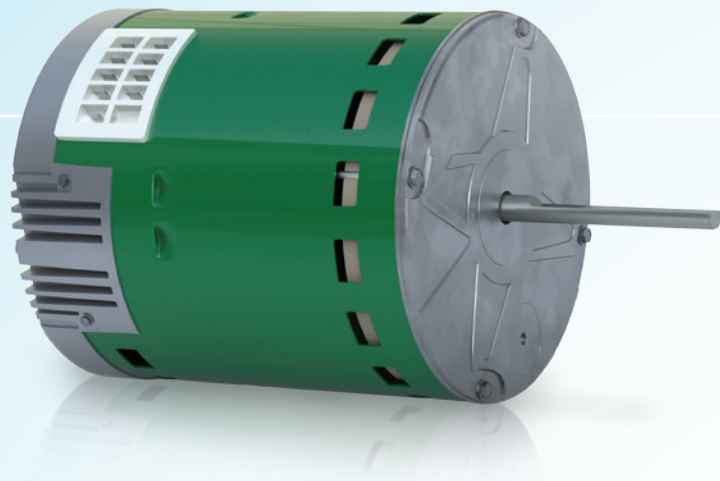
EVER EFFICIENT. EVER RELIABLE. EVER PROFITABLE.



 genteq®

A Regal Brand

REGAL



Evergreen® · EM

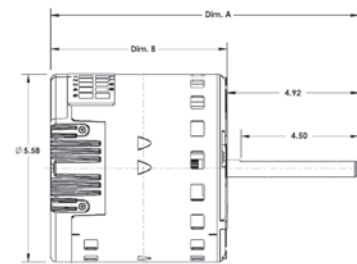
No programming required

SPECIFICATIONS

- Multi-speed, constant torque, brushless DC motor
- Available in 115V or **208-230VAC** single-phase input, 50/60Hz
- Designed to replace direct-drive blower motors in residential and light commercial indoor furnaces, air handlers, and package systems that were designed with a standard ECM motor, such as an X13 or equivalent competitor model.
- Available in 1/3, 1/2, 3/4 and 1HP ratings
- Automatically determines motor direction using Genteq's Rotation Sensing Technology.
- 5 discrete speeds using 24VAC (3 using 18VDC) Low voltage signal harness provided with the motor.
- Operating speed range of 600-1200 rpm
- NEMA 48-frame (5.6 inch diameter) Belly Band Mount with 5-inch long ½ inch diameter shaft.
- UL and CSA recognized component.

BENEFITS

- Standard ECM Replacement
(Does not replace premium ECM constant airflow products such as Eon, 3.0, 2.3, and 2.5)
- Maintains ECM-level Efficiency up to 80%
- Soft Start and Off Ramp for quiet operation
- Alternate use for Commercial Building Series VAV Box and Packaged Heat Pump Retrofit/Upgrade Motor for a PSC system (Refer to Evergreen EM Instruction Manual)
- Encapsulated Electronics
- 4kV Surge Protection
- Electronic Overload Protection



Rotation Sensing Technology™

MOTOR COMPARISON

	PSC MOTOR	STANDARD ECM (X13)	PREMIUM ECM (Eon & 3.0)	ECM RETROFIT Evergreen EM
TECHNOLOGY	Induction Motor	Brushless DC	Brushless DC	Brushless DC
AVAILABLE HORSEPOWER	1/3, 1/2, 3/4, 1 HP	1/3, 1/2, 3/4, 1 HP	1/3, 1/2, 3/4, 1 HP	1/3, 1/2, 3/4, 1 HP
SPEEDS	Select 1-5 taps	Select 1-5 taps	Variable-speed	Select 1-5 taps
SPEED RANGE	800-1100 RPM	600-1100 RPM	200-1300 RPM	600-1200 RPM
CLIMATE PROFILES	NO	NO	YES	NO
INTELLIGENT CONTROLS	NO	Constant Torque	Constant Airflow	Constant Torque
ADVANCED FEATURES	NO	NO	Communicating Motor, BlaKBox™ Technology	NO
PEAK MOTOR EFFICIENCY	59%	80%	80%	80%
AVERAGE POWER * (COOLING CFM)	515 W	413 W	413 W	413 W
AVERAGE POWER * (CONTINUOUS FAN CFM)	515 W	200 W	83 W	95 W
SUMMARY	No Features, Baseline Product	Limited Features, High Efficiency	Full Features, Maximum Efficiency	Limited Features, High Efficiency
APPLICATION	Retrofit & OEM	OEM	OEM	Retrofit for indoor standard X13 ECM Motors

* Average power consumption based on specified setting in a typical three-ton system.

Evergreen EM Motors

STOCK NO.	HP	VOLTS	MAX CURRENT	ROTATION	DIM A	DIM B	APPROXIMATE WEIGHT
6103E	1/3	115	4.8 A	CCW/CW	10.17"	5.25"	8.4 lbs
6203E	1/3	208-230	2.8 A	CCW/CW	10.17"	5.25"	8.4 lbs
6105E	1/2	115	6.8 A	CCW/CW	10.67"	5.75"	11.3 lbs
6205E	1/2	208-230	4.1 A	CCW/CW	10.67"	5.75"	11.3 lbs
6107E	3/4	115	8.4 A	CCW/CW	11.42"	6.5"	15.6 lbs
6207E	3/4	208-230	6.0 A	CCW/CW	11.42"	6.5"	15.6 lbs
6110E	1	115	10.9 A	CCW/CW	12.17"	7.25"	19.3 lbs
6210E	1	208-230	7.6 A	CCW/CW	12.17"	7.25"	19.3 lbs



Evergreen®

Call to order 1-800-672-6495



1325 Heil Quaker Boulevard
LaVergne, TN 37086
PH: 615-793-6781

thedealertools.com

©2013 Regal-Beloit Corporation

A Regal Brand

REGAL

www.regalbeloit.com